

# Carver / Charisma

SE



**Concorde**  
REISEMOBILE AUS LEIDENSCHAFT



## THE MOST MODERN AND MOBILE WAY TO TRAVEL.

Experience the fascination of the highest level of mobility on the road with the Carver and the Charisma. Luxurious furnishings and cutting-edge automotive engineering, outstanding quality and perfect craftsmanship – the Carver and the Charisma exceed even the highest of expectations. They also set standards with their incisive stylistic elements in Concorde's progressive design. And it goes without saying that they continue to represent those values for which Concorde has always stood: just like each and every one of our motorhomes, the Carver and Charisma are absolute premium products full of innovation, precision and passion.



**Get the complete overview!** Some of the illustrations in this brochure are accompanied by a QR code. For an interactive, 360-degree view on a smartphone or a tablet, simply scan the code with a QR code reader.

# C CONTENTS

Carver	4
Floor plans	20
Charisma	22
Floor plans	42
Design concepts, leather and fabrics	46
Technical features	50
Passion	34

# Carver

TRAVEL WITH EASE LIKE NEVER BEFORE.

Sporty, beautiful, weightless: The Carver with its modern Lines bursts with confidence. Its fully overhauled bodywork with striking front and rear sections demonstrates the distinctive signature of a new generation of Concorde developers. The high-quality interior design of the new floor plans is elegant, straightforward and lightweight. And the construction is also characterised by lightness: the intelligent use of materials significantly reduces the weight of the Carver. What's more, it goes without saying that it also excels in terms of its technology, functionality and winter strength.





W  
HIGH QUALITY DOWN  
TO THE LAST DETAIL.

**The livingroom.** The intelligent interior concept of the Carver offers functionality in symphony with comfort in perfect balance. The ergonomically designed suite and light weight furniture in quality "Wenge optics" together with the high gloss overhead locker fronts in cream white "Senosan" (in livingroom only) are standard as is the comfortable floor covering in parquet look. The Yacht and Slate effect flooring are optional as is the exclusive version in "Noce" combined with the high gloss cream white fronts. Wenge enables the choice between high gloss cream white and the high gloss furniture fronts in wood colour for the over head lockers.







MAGNIFICENT COOKING.  
NOTHING COULD BE SIMPLER.

**The kitchen.** The new Carver kitchen is a real lightweight. After all, it weighs roughly thirty kilograms less than its predecessor. Form and function don't contradict each other here; in fact, they are mutually dependent – this can be seen, for instance, in the mineral worktop with a stainless-steel hob and seamlessly mounted stainless-steel sink. An exclusive design, perfect furnishings and exemplary ergonomics make cooking in the Carver a pure joy.









## CONVENIENCE GALORE.

**The bathroom.** Pure motorhome pleasure, even in the bathroom: Start your day fresh and in high spirits in the redesigned Concorde bathroom with separate shower, heated towel rail and large mirror. The washstand with the perfectly fitted washbasin is equipped with a single-lever chrome mixer tap. Numerous storage compartments provide ample space for toiletries.





## WONDERFULLY CALMING RELAXATION AREA.

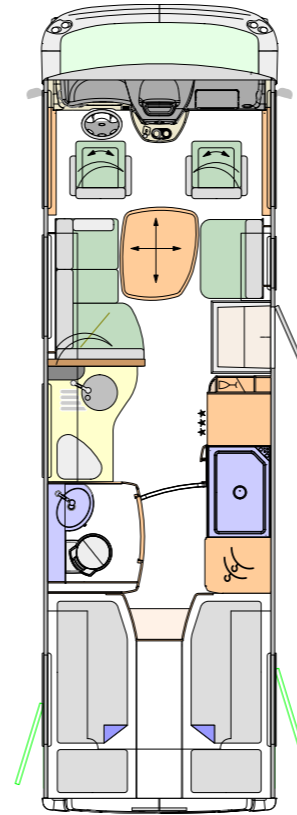
**The bedroom.** Sometimes, you need a little more. For example, when it comes to your sleeping comfort: in the rear beds with sprung base in the newly developed sleeping area, you'll rest in perfect relaxation. All carver models are fitted with a comfortable cold-foam mattress. What's more, the beds in the M and L floor plans now come with comfortable head cushions as standard. A spacious fold-down bed can be added as an additional sleeping option on request.



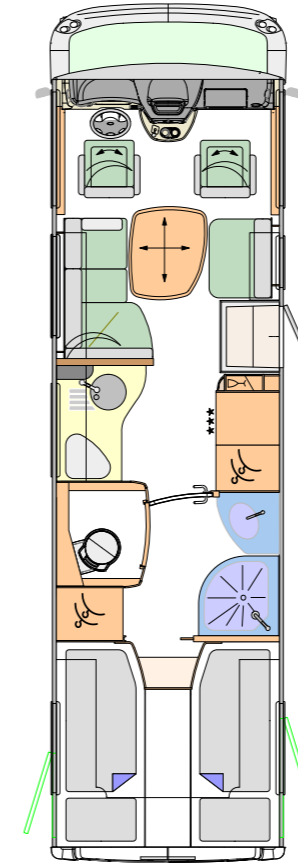
## DIVERSE RANGE, IMPRESSIVELY FORMED.

**Floor plans.** The new floor plans of the Carver models are thought out down to the last detail. They combine a spacious room feel with a functionality that is perfected in every detail. For perfectly-designed comfortable travel.

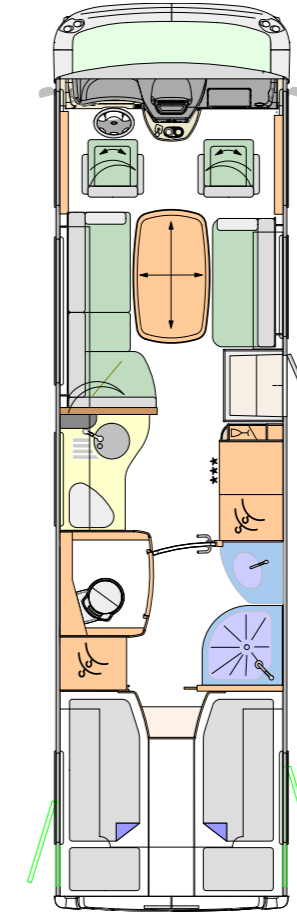
Carver 791 L



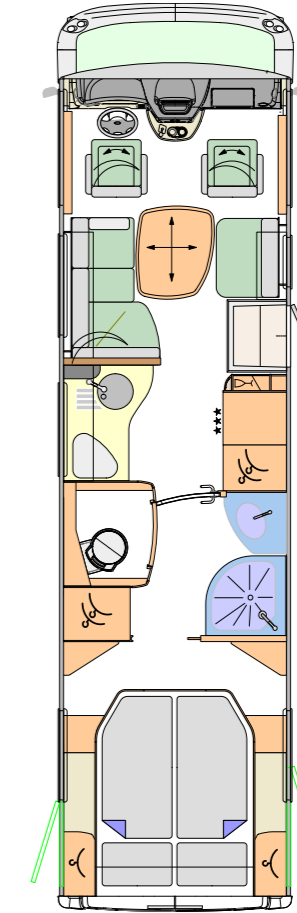
Carver 844 L



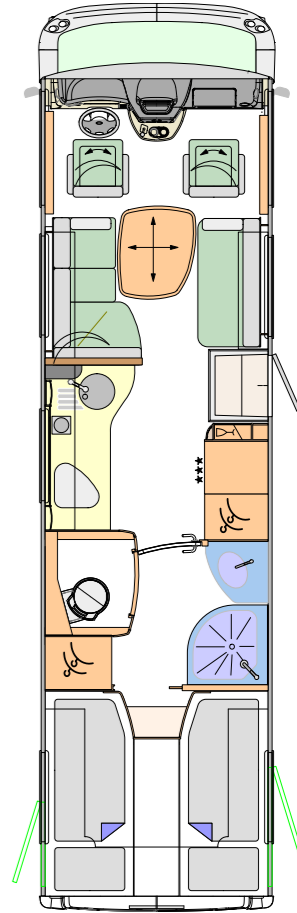
Carver 894 L



Carver 894 M



Carver 896 L



# Charisma

ALREADY A MODERN CLASSIC.

The third generation also marks another milestone in the development history of the luxury motorhome. As the first vehicle in the new progressive Concorde design, the Charisma represents the start of an era. Its advanced design, the intelligent technology and the uncompromising comfort are shaping the style of the premium class. Tried-and-tested aspects such as the body construction made of double-aluminium sandwich panels for optimum insulation performance have been retained. Some trend-setting innovations have been added to this – such as the particularly impressive bathroom in the new Charisma 905 L. Together giving you now the choice of six floor layouts and two chassis for the Charisma.







## SPACIOUSNESS CREATES VAST OPEN SPACES.

**The living room.** A trademark Concorde premium motorhome living space: spacious, tremendously comfortable, and with high-quality furnishings. Depending on the model, the seating group is available either as a bar version or in the lounge version with five seats. And for even more free space when on the go, the driver's and passenger's seats can be integrated perfectly into the living room. This spacious feel is supported by the Concorde One Level Concept, with one continuous level running from the driver's compartment to the sleeping area with no steps. It is fitted with the new Soft-walk flooring for a particularly high level of walking comfort as well as improved sound insulation. Deeper wall units now offer even more storage space.







## FUNCTIONALITY INSPIRES CULINARY PASSION.

**The kitchen.** Putting the fun into cooking: you'll be able to serve up delicious dishes on the table in the spacious kitchen. Thanks to the particularly lightweight design, the entire furnishings weigh almost thirty kilograms less than in the previous model. Fully extendible larder units offers plenty of storage space. The invariably high-quality kitchen appliances are ergonomically and intelligently integrated. A stainless-steel hob with splash protection, large refrigerator and mineral worktops with neatly embedded stainless-steel sink may not make everybody into a culinary genius, but you'll certainly be cooking in a kitchen worthy of one.







# R

## RELAXATION IS A QUESTION OF QUALITY.

**The bathroom.** Start your day in a spa-like oasis! The tastefully furnished bathroom – optionally with a separate toilet – extends across the whole width of the Charisma and creates an entirely new sense of space. Enjoy the high-quality furnishings with stainless-steel taps from Hansgrohe, as well as surfaces, washbasin and shower tray made of fine artificial stone. What's more, thanks to the standard 380-litre water tank, you can go a long time without needing an external water supply, allowing you to relax as long as you like in the shower.







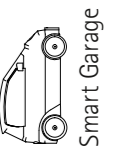
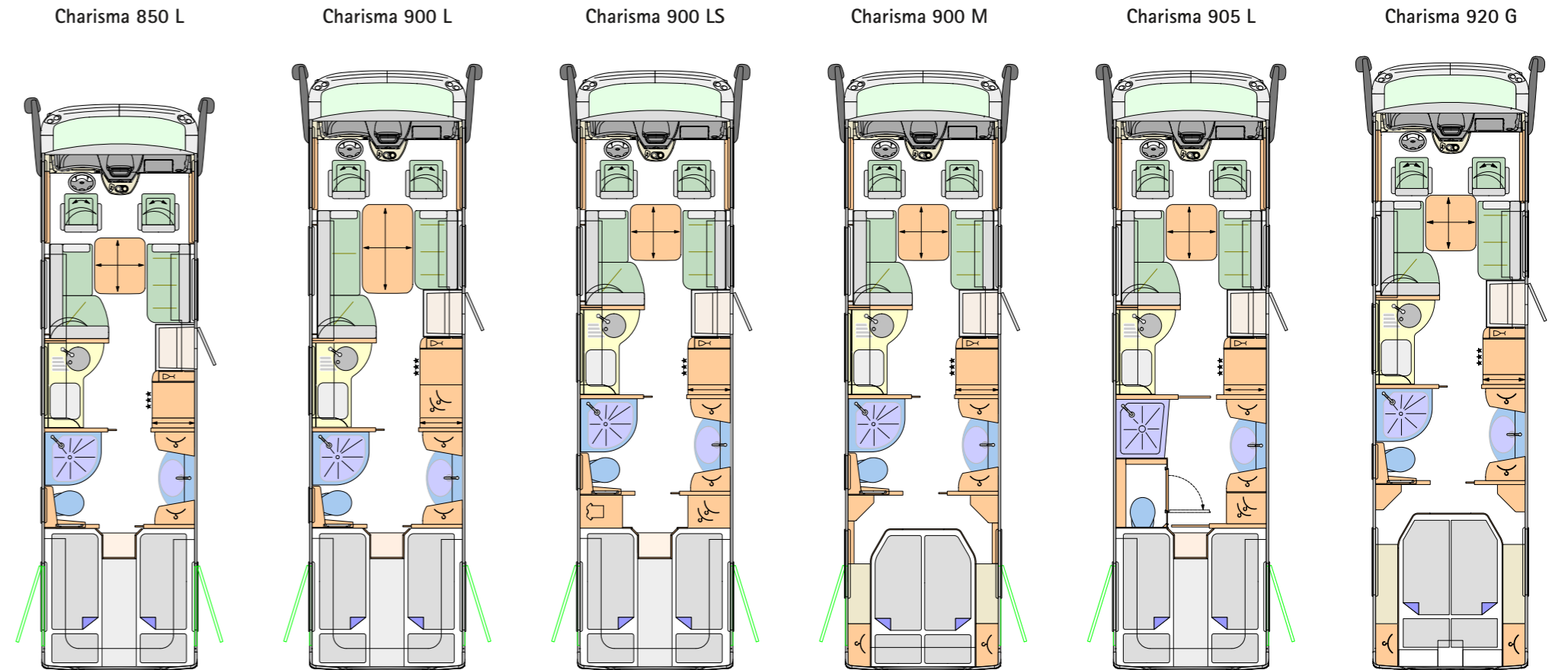
COMFORT CAN EVEN BE  
FELT WHEN SLEEPING.

**The bedroom.** Welcome into your own private dream land! Concorde's exquisite sleep concept with deluxe mattress and robust spring supports are so comfortable that you will not want to leave your bed at all. A breathtaking abundance of space is at your disposal, from the bed size through to the storage lockers. A true five star camper.



## FLEXIBILITY REFLECTED IN MANY FORMS.

**The floor plans.** Choose the room layout that best suits your needs. There are currently six floor plans to choose from, with single beds or a queen-size bed in the rear. These always include a great deal of free space for your own ideas.





## INGENUITY EXPRESSED IN SIMPLICITY.

**Carver and Charisma driver's compartment.** Functionality is the defining factor in our modern user friendly designed cockpit. Not only does the leather-covered dashboard with round instruments, handy cooling compartment and analogue Concorde clock look top-class, it is also very clear to see. Perfectly positioned and thus easy to operate for the driver and passenger alike: the radio navigation system.



Carver, Wenge with high gloss cupboard fronts



Charisma, Wenge



Charisma, Noce only in combination with high gloss cupboard fronts (added option)

## TWO VEHICLES, TWO WOOD EFFECTS, AN IMPOSING APPEARANCE.

**The Design Concept.** Variations within the design concept in both of the models available combine to achieve an overwhelming experience. The Carver and Charisma are both available not only in the standard furniture versions of Wenge, but also in the exclusive variation "Noce" (Optional extras). The option "Noce" is only available in conjunction with the high gloss cream white fronts. For a maximum on walking comfort as standard we have the comfortable Floor covering in parquet finish, complemented with the Slate or Yacht optics as optional extras.



# EXPRESSIVE IN ITS INTERIOR QUALITIES.

**Leather and fabrics.** We are offering you a large selection of different full-grain-leather, partialleather and microfibre covers; a few examples of these can be seen on the right-hand side. All materials are meticulously manufactured in selected workshops, adhering to Concorde's strict quality requirements. To allow them to retain their typical qualities for as long as possible, they undergo an innovative waterproofing process: our microfibre materials are equipped with ConLotus, whilst our leathers are equipped with the anti-soiling Aquaderm X-Shield. Dirt does not stick, liquid simply rolls off, and the feel and suppleness are preserved. In addition, you can choose the Concorde designed Redonda upholstery. It ensures optimum grip, relaxes the spine and supports the lumbar region.



Classic – Upholstery



Textile/microfibre combination "Cream"



Textile/microfibre combination "Caramel"



Leather "Stone"



Redonda – Upholstery Toffee



Leather "Savanna"



Leather "Mother-of-pearl"



Exclusive Leather "Rustic Grey"

## SIMPLY WONDERFULLY THOUGHT THROUGH. TECHNOLOGY AND OTHER FEATURES.

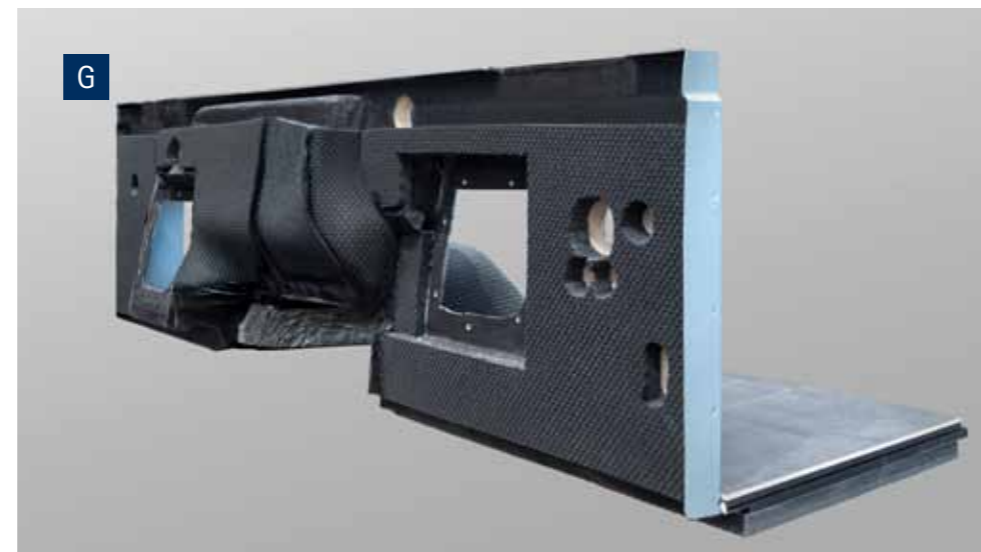
**A Jehnert soundsystem.** The Hi-Fi components, made in Germany, are optionally available and can be perfectly integrated into the Charisma ambiance. The system in the Charisma consists of a 3-way speaker (driver's compartment), a 2-way speaker (living room), a double-bass reflex subwoofer, a sound processor and vehicle-specific frequency crossover.

**B Windscreen.** The panoramic laminated glass windscreen consists of two panes with a thin layer of metal in between. It is stable, it filters UV rays from sunlight and it reduces solar radiation, all of which guarantees optimum visibility while driving. What's more, the screen is heated and is part of the Carver and Charisma standard equipment.

**C Mastervolt.** The Mastervolt battery-management system monitors the charging cycles of the batteries, ensures a perfect utilisation of the storage capacity and prevents deep discharge. In the event of a weak mains connection, the Mastervolt system supports the land-based power. It can be controlled using a clear operating element with a battery monitor, and is available for all Concorde motorhomes.

**D Rear bed with sprung base.** In this modern sleep concept, a refined sprung base replaces the previously used slatted frame. The high-quality cold-foam mattress and the adjustable headrest also ensure a particularly comfortable night's sleep. The rear bed with sprung base is part of the standard equipment of the Charisma and is optionally available for the Carver.





**E Engine compartment.** Perfectly tidy: the important elements in the engine compartment are easily accessible. Windscreen washer water and oil, for instance, can therefore be checked and refilled with ease.

**F Service flaps.** The new service flaps on Concorde motorhomes make the intermediate floors perfectly accessible. This makes loading and unloading this cross-cut storage space, even with bulky objects such as camping furniture, significantly easier.

**G Fully insulated engine front wall.** Exclusivity sometimes begins where nobody can see it: Concorde is replacing the partition originally installed between the engine compartment and the driver's compartment with a full-sandwich wall. This protects the vehicle interior from engine noise and provides optimum insulation (high level of efficiency in winter).

**H Alde hot-water and gas central heating.** Hot-water and gas heating from Alde heats the vehicle consistently and thus maintains the natural air humidity. The temperature can be control individually using the thermostat as well as a timer. This doesn't stir up dust like conventional blower heaters do. The boiler is equipped with electronic heating cartridges which can either be used separately or in combination with liquid gas. An Alde system has a duct shut-off and an integrated hot-water boiler which supplies all tapping points. It is included in the standard equipment for all Concorde motorhomes.





OUR DRIVE FOR  
YOUR PASSION.

**The essence of mobile travel.** Concorde is committed to the concept of quality craftsmanship. We manufacture motorhomes of the highest quality for the highest demands. Every vehicle is unique, every vehicle is a masterpiece, classically hand-crafted in a traditional Franconian company, with unwavering passion, enthusiasm and inspiration. Because a passion for motorhomes is what unites the people at Concorde. And it is that which unites us with you.



*“It remains our daily objective to not only to build Motorhomes to the highest possible standard, but also to fulfill the hopes and dreams of our customers.”*

**Bastian Mathy**  
*Head of Production*



*“There are no limits in terms of Quality, therefore we continue to believe that no matter how good we may be, there is always room for improvement.”*

Patrick Murphy  
Quality-Manager





*“In the service department, we provide straightforward assistance and solve problems quickly. Only the customer can decide whether we have done a good job. We are only completely satisfied with our own performance when the customer is.”*

**Armin Dietz**  
Head of customer service



# **Concorde**

REISEMOBILE AUS LEIDENSCHAFT

Concorde Reisemobile GmbH

Concorde-Straße 2-4 | D-96132 Schlüsselfeld-Aschbach

Tel.: +49 (0) 9555 9225-0 | Fax: +49 (0) 9555 9225-44

Web: [www.concorde.eu](http://www.concorde.eu) | E-Mail: [info@concorde.eu](mailto:info@concorde.eu)

All information and illustrations apply to Concorde motorhomes from the 2016 model year. The model programme, technical specifications and features may vary from country to country. The design is based on the German Road Traffic Act (Straßenverkehrs-Ordnung – StVO) and the Road Traffic Licensing Regulations (Straßenverkehrs-Zulassungs-Ordnung – StVZO).

We reserve the right to make changes, including without prior notice. Your Concorde dealer will be happy to provide you with up-to-date information.

Please note that some illustrations also show vehicles with optional extras, which may deviate from the standard range.